

Części zamienne dla Citizen/Star Spare parts suitable for Citizen/Star

Części do podajników prętów patrz Tab. 10
Loading magazine accessories Tab. 10



Citizen	strona
Oprawka wiertarska	2
Tuleja zacisku	1
Dźwignia zacisku	1
Mufa wrzeciona	2

Star	
Oprawka wiertarska	2
Tuleja zacisku	6
Dźwignia zacisku/- Os	3/4/6
Mufa wrzeciona	5

Citizen/Star	
Tuleja wiertarska	7/8

Citizen	
Chuck lever	1
Pressure sleeve	1
Spindle head nut	2
Three-way drilling holder	2

Star	
Chuck lever/-pins	3-4
Clamping sleeve	6
Pressure sleeve	6
Spindle head nut	5
Three-way drilling holder	2

Citizen/Star	
Boring bar admission	7/8

Dźwignie zacisku dla/Chuck lever for Citizen



Art.-Nr. 101002

Oznaczenie Designation	Suit. Pin	Ident - Nr./Dia. Ident - No./Dia.	Art.-Nr. Art.-No.	
CNC-Obrabiarka:				
B 12 B-Spindel	1	B 12 U 50C416	101006	
B12 Gegenspindel	5	B 312 U 53-413	101014	
B 12, BS 20, K 16 HS*	2	F 412 SC 117	101005	
BS 20, K 16 B-Spindel		B 20 U 50C111	101012	
C 16 Haupt-/B-Spindel	2		101005	
F 12, L 20	2	F 412 SC 117	101005	
G 16			101013	
L 16 E, L 20 Hauptspind.	3		101002	
L 16/20, A 20 (L=55mm #)	4	L 216 C114	101001	
L16/20 Gegensp., L10 L16/N Hauptsp. (L=52,2)	4	L 216 U41B 122	101008	
M 20/32, L 25, C 32, A20	3		101007	

HS=Hauptspindel/Main spindle

R-Spindel/Abstreif -Subspindle

Osie pasujące do/Pins suitable for Citizen

Opis Designation	Ident - Nr./Dia. Ident - No./Dia.	Art.-Nr. Art.-No.	
Stift/Pin 1	4 m 6 x 22	101010	
Stift/Pin 2	6 m 6 x 40	101009	
Stift/Pin 3	8 m 6 x 45	101004	
Stift/Pin 4	4 m 5 x 30	101003	
Stift/Pin 5	4 h 6 x 30	101015	

Citizen Tuleja zacisku - Pressure sleeve

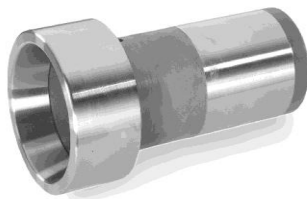


Photo (Traub)

Typ obrab. Machine	D	d	L	Tuleja Pliers	Art.-Nr. Art.-No.	
L 16 VI/VII M 20 - L 20	46	35	103	145 E	701260	
L 16 VII M 20	44	35	121,5	145 E	701261	
L 520-VIII	41,5	35	198	145 E	701262	
E 16 : B	45	38	134,5	145 E	701263	
E 32 : A	59	50	142	F 37	701264	
E 32 : B	59	50	160	F 37	701265	
M2 16 : A	36	30	110	138 E	701266	
M2 16 : B	33	30	110	138 E	701267	
M 12 : B	28	24,5	98	120 E	701268	
B 12 : A	24,5	23	89	120 E/ F15	701269	
B 12 : B	28	23	90	120 E/ F15	701270	
K 12 : A	33	28	180	120 E/ F15	701271	
K 12 : B	30	30	110	120 E/F15	701272	
K 16 : A	33	28	180	138 E	701273	
K 16 : B	33	30	110	138 E	701274	

A=Hauptspindel, B=Gegen-/Abgreifspindel

A=Main spindle, B=Subspindle



Photo (Traub)

Citizen Mufa wrzeciona Citizen Spindle head nut

Typ obra. Machine	D	Gwint d/thread	H	Art.-Nr. Art.-No.
L 16 I : A	60	M50x1,5	55	701280
L 16 VI/VII M 20 - L 20	66	M50x1,5	43	701281
L 16 VII M 20	60	M50x1,5	40	701282
L 520 - VIII	60	M50x1,5	58	701283
E 16 : B	66	M50x1,5	42	701284
E 32 : A	92	M75x1,5	42	701285
E 32 : B	80	M70x1,5	43	701286
M ² 16 : B	48	M40x1,5	32	701287
M 12 : A	42	M33x1	25	701288
M 12 : B	45	M35x1,5	32	701289
B 12 : A	42	M32x1	32	701290
B 12 : B	42	M32x1	25	701291



Art.-Nr. 700...

Citizen Oprawka wiertarska Citizen Three-way drilling holder

Typ obra. Machine	D	Ident - Nr. Ident - No.	Art.-Nr. Art.-No.
12/16	¾"	VDF 101	700100
12/16	¾"	VDF 201	700101
12/16	2 x ¾"	VDF 401	700102
12/16	¾"	VDF 501	700103
M 20, M32, E 25-IV	1"	CDF 101	700104
M 20, M32, E 25-IV	1"	CDF 201	700105
M 20, M32, E 25-IV	1"	CDF 301	700106
M 20, M32, E 25-IV	2 x 1"	CDF 401	700107



Art.-Nr. 700...

Star Oprawka wiertarska Star Three-way drilling holder

Typ obr. Machine	D	Ident - Nr. Ident - No.	Art.-Nr. Art.-No.
KNC32, SV 20, SV 32	3 x 22	421 - 12	700109
KNC32, SV 20, SV 32	3 x 32	431 - 12	700110
KNC32, SV 20, SV 32	3 x 22	431 - 11	700111
KNC32, SV 20, SV 32	3 x 22	U088-1-00	700112
KNC32, SV 20, SV 32	32	781 - 12	700113
KNC32, SV 20, SV 32	2 x 22	781 - 13	700114
KNC32, SV 20, SV 32	22	781 - 16	700115
KNC 32		781 - 06	700116



Art.-Nr. 700...

Dźwignie zacisku/Chuck lever suitable for STAR



Art.-Nr. 102621



Art.-Nr. 102651

Osie na następnej stronie!
Suitable pins see next page!

Typ obra. Machine	D	Ident - Nr. Ident - No.	Stift Pin	Art.-Nr. Art.-No.	
CNC-Obrabiarki					
ECAS-20	Subspindle	540-39-600/620	9	102651	
ECAS-32T	Mainspindle	580-320-70	4	102654	
ECAS-32T A48	Subspindle	580-840-70	4	102655	
JNC 16	Mainspindle	025-32-060/080	3	102601	
JNC 25 / 32		052-32-070/090	5	102602	
KJR 16	Mainspindle	250-32-090/100	3	102609	
KJR 16	Subspindle	252-32-070/090	2	102616	
KJR 25	Mainspindle	260-32-070/090	4	102622	
KJR 25	Subspindle	262-32-070/090	4	102622	
KJR 25 II	Mainspindle	360-32-070/090	4	102622	
KJR 25 II	Subspindle	362-32-080/100	4	102622	
KNC 16/20	Subspindle	222-32-230/250	6	102606	
KNC 16/20 m.P.	Mainspindle	220-32-070/090	4	102615	
KNC 25/32	Mainspindle	200-32-070/090	5	102602	
KNC 25/32	Subspindle	202-32-230/250	6	102608	
KNC25/32 II	Mainspindle	340-32-070/090	5	102602	
KNC25/32 II	Subspindle	342-32-230/250	6	102608	
KNC 32 II	Subspindle	342-32-231/250	6	102620	
RNC 16	Mainspindle	210-32-060/080	3	102609	
RNC 16	Subspindle	270-82-080/100	1	102610	
RNC SR 32	Subspindle	342-32-231/250	6	102620	
SA 16/12	Mainspindle	460-32-100/120	3	102609	
SA 16/12	Subspindle	460-82-080/100	2	102624	
SB 16	Subspindle	460-82-080/100	2	102624	
SH/SE/SB 16	Mainspindle	400-32-100/120	3	102609	
SH 7		410-32-100/120	8	102619	
SNC 15		196-32-060/080	3	102601	
SNC 25		091-32-060/080	5	102611	
SR 10 J	Mainspindle	460-82-080/100	2	102624	
SR 10 J	Subspindel	690-83-070/090	10	102625	
SR 16	Mainspindle	310-32-090/100	3	102609	
SR 16	Subspindle	312-32-070/090	2	102613	
SR 16 R		540-39-100	9	102651	
SR 20	Subspindle	322-32-070/090	6	102606	
SR 20 R		540-84-050/070	6	102650	
SR 20 R	Mainspindle	540-39-600/620	9	102651	
SR 20 RII		660-84-050	6	102650	
SR 20 RII	Mainspindle	660-39-600	9	102651	
SR 20/32		330-32-090/100	4	102622	



Art.-Nr. 102621

Dźwignie zacisku/Chuck lever suitable for **STAR**

Typ obra. Machine	D	Ident - Nr. Ident - No.	Stift Pin	Art.-Nr. Art.-No.	
CNC-Obrabiarki					
SR 32	Subspindle	332-32-090/110	6	102620	
SR 32 J	Main- /Subspindle	670-320-90	6	102653	
SST 16		300-32-090/100	3	102609	
SST 16	Mainspindle	210-32-060/080	3	102609	
SST 16	Subspindle	302-32-070/090	2	102612	
SV 12	Mainspindle	540-39-600/620	9	102651	
SV 12	Subspindle	452-32-100/120	9	102652	
SV 12		823-00-306	9	102652	
SV 20	Main- /Subspindle	420-32-060/080	4	102621	
SV 32	Mainspindle I	440-32-090	4	102622	
SV 32	Mainspindle II	430-32-090	4	102622	
SV 32	Subspindle	442-32-090/110	6	102623	
SW 7/R	Mainspindle	380-32-130/150	8	102619	
SW 7/R	Subspindle	382-32-110/130	8	102619	
VNC 20 o.Phase	Mainspindle	750-32-060/080	4	102615	
VNC 20	Subspindle	749-21-180/190	2	102616	
VNC 32		780-32-060/080	5	102602	

Osie pasujące do **STAR** - Dźwigni zacisku Pins suitable for **STAR** - CHUCK LEVER



Art.-Nr. 112604
Art.-Nr. 122606

Os Nr. Pin No.	Gwint Thread	Art.- Nr. Art.- No.	
Stift/pin 1	5 x 28,5	112601	
Stift/pin 2	6 x 31	112602	
Stift/pin 3	6 x 46	112603	
Stift/pin 4	8 x 48	112604	
Stift/pin 5	8 x 58	112605	
Stift/pin 6 (mit Absatz/with shoulder)	8 x 36	112606	
Stift/pin 8	6 x 34	112608	
Stift/pin 9	8 x 50	112609	
Stift/pin 10	6 h7 x 30,5	112610	

Star Mufa wrzeciona Star Spindle head nut



Photo (Index)

Maschine Machine	D	Gew. Thread	H	Art.-Nr. Art.-No.	
ECAS 12/16 B-Spindle	55	M45x1,5	38	701056	
ECAS 20 A-Spindle	67	M56x1,5	28	701069	
ECAS 20 B-Spindle	59	M50x1,5	39	701070	
KJR 25 A-Spindle	72	M60x1	52	701071	
KJR 25 B-Spindle	64	M56x1	34	701072	
KNC 32 B-Spindle	73	M62x1	42	701076	
KNC, JNC, VNC, SR 32	88	M76x1,5	35	701073	
RNC 16 A-Sp., SB 16	49,5	M44x1,5	40	701057	
RNC 16 B-Spindle alt	39,5	M33x1,5	25	701060	
RNC 16 B-Spindle neu	44	M38x1,5	23	701059	
SA 12/16 A-Spindle	55	M44x1,5	42	701054	
SA 12/16 B-Spindle	46	M40x1,5	23	701055	
SA/SB 16 A-Spindle	55	M44x1,5	42	701058	
SR 16 R B-Spindle	59	M50x1	41	701063	
SR 20 A-Sp., KNC, VNC	64	M56x1,5	40	701065	
SR 20 B-Sp., KNC 20 B-Sp.	59	M50x1	41	701066	
SR 20 R A-Spindle	67	M50x1,5	40	701067	
SR 20 R B-Sp., SV 20 B-Sp.	59	M50x 1	41	701068	
SR 32 B-Sp., SV 32 B-Sp.	73	M62x1	43	701075	
SST 16 A-Sp., KJR, SR	55	M44x1,5	42	701061	
SST 16 B-Spindle	50	M44x1,5	30	701062	
SV 12 A-Sp., SA 16 R	55	M45x1,5	38	701052	
SV 12 B-Spindle	46	M40x1,5	23	701053	
SV 20 A-Spindle	67	M56x1,5	28	701064	
SV 32 A-Spindle	90	M76x1,5	35	701074	
SW 7 A-Spindle	42	M36x1,5	23	701050	
SW 7 B-Spindle	42	M36x1,5	27,5	701051	

A=Hauptspindel/Mainspindle
B=Gegen-/Abgreifspindel/Subspindle

STAR

Tuleje zacisku

Pressure sleeve



Art.-Nr. (Index)

Maschine Machine	d	D	L	Zange Pliers	Art.-Nr. Art.-No.	
ECAS 12/16 B-Spindle	34	37,5	96	138 E	701086	
ECAS 20 A-Spindle	35	42	104	145 E	701097	
ECAS 20 B-Spindle	35	41,5	101,5	145 E	701098	
KJR 25 A-Spindle	46	53	103	157 E	701099	
KJR 25 B-Spindle	40	47	142	157 E	701100	
KNC, JNC, VNC, SR 32	48	56	136	F 37	701101	
RNC 16 A-Sp., SB 16	34	42	87	138 E	701087	
RNC 16 B-Spindle alt/old	25	24	90	120 E	701089	
RNC 16 B-Spindle neu/new	26	30	90	138 E	701088	
SA 12/16 A-Spindle	34	42	87	138 E	701084	
SA 12/16 B-Spindle	31,5	31,5	87,5	138 E	701085	
SR 16 R B-Spindle	35	42	104	138 E	701091	
SR 20 A-Sp., KNC, VNC	35	42	104,5	145 E	701093	
SR 20 B-Sp., KNC 20 B-Sp.	35	42	101	145 E	701094	
SR 20 R A-Spindle	35	38	110	145 E	701095	
SR 20 R B-Sp., SV 20 B-Sp.	35	42	101	145 E	701096	
SR 32 B-Sp., SV 32 B-Sp.	64	73	43	F 37	701103	
SST 16 A-Sp., KJR, SR	34	42	87	138 E	701090	
SV 12 A-Sp., SA 16 R	34	38,5	93	138 E	701082	
SV 12 B-Spindle	31,5	31,5	87,5	138 E	701083	
SV 20 A-Spindle	35	42	104	145 E	701092	
SV 32 A-Spindle	48	56	140	F 37	701102	
SW 7 A-Spindle	21	27	83	120 E	701080	
SW 7 B-Spindle	21	27	90	120 E	701081	

Spindle=Spindel

A=Hauptspindel/Mainspindle

B=Gegen-/Abgreifspindel/Subspindle



Art.-Nr. 122601

STAR - Mufa zacisku

STAR - Clamping sleeve

Typ obrabiarki Machine	Type	Art.-Nr. Art.-No.	
KNC	25/32 alt/neu	122601	
KNC	25/32		

Oprawki wiertarskie
Boring bar admission
pasujące do Citizen i Star
Oprawki wiertarskie precyzyjne
Drill arm is exactly horizontal positioned



Art.-Nr. 701186

Typ obrabiarek Machine	d	D	Aufn. Fixt.	całkowita Complete L	Art.-Nr. Art.-No.
Citizen L25 M 20/25 E 32	4	25,4	28	110	701185
	6	25,4	28	110	701186
	8	25,4	28	110	701187
	10	25,4	28	110	701188
	12	25,4	28	110	701189
	16	25,4	28	110	701190
	20	25,4	28	110	701191
Citizen L16-20 B12 C16 M12/16	4	19,05	28	70	701192
	6	19,05	29	70	701193
	8	19,05	30	70	701194
	10	19,05	31	70	701195
	12	19,05	32	70	701196
	16	19,05	33	70	701197
Citizen B12 u.a.	6	20	22	70	701204
	8	20	22	70	701205
	10	20	24	70	701206
	12	20	26	70	701207
	14	20	29	70	701208
	16	20	29	70	701209
Star SR 10 J	4	16	15,8	90	701210
	6	16	15,8	90	701211
	8	16	15,8	90	701212
	5	16	15,8	90	701213
Star SR 32 J	6	32	32	105	701214
	8	32	32	105	701215
	10	32	32	105	701216
	12	32	32	105	701217
	14	32	32	105	701218
	16	32	32	105	701219
	20	32	32	105	701220
Star RNC 16 B SR 16/20/32 KNC SNC SV 12/20/32 SA 12/16 SE 12/16	5	22	24	112	701221
	6	22	24	112	701222
	8	22	24	112	701223
	10	22	24	112	701224
	12	22	24	112	701225
	14	22	24	112	701226

Oprawki wiertarskie
Boring bar admission
 pasujace do/suitable for Star
 oprawki wiertarskie precyzyjne
 Drill arm is exactly horizontal positioned

Typ obra. Machine	d	D	Aufn. Fixt.	Calkowita Total L	Art.-Nr. Art.-No.
SR 10 J SW 7	6	16	18	70	701227
	8	16	18	70	701228
	10	16	18	70	701229
	12	16	18	70	701230
Original Star RNC 16 B SR 16/20/32 SV 12/20/32 SA 12/16 SE 12/16	6	22	24	105	701231
	8	22	24	105	701232
	10	22	24	105	701233
	12	22	24	105	701234
Original Star SB 16 (22mm durchgeh. geschliff.)	6	22	22	126	701235
	8	22	22	126	701236



Art.-Nr. 701186

Oprawki wiertarskie
Boring bar admission
 pasujace do/suitable for Star
 Oprawki wiertarskie precyzyjne
 Drill arm is exactly horizontal position

Typ obra. Machine	d	D	calkowita Total L	Art.-Nr. Art.-No.
Star SR 16/20 przechwyty/back side	5	16	46	701238
	6	16	46	701239
	8	16	46	701240
	10	16	46	701241
Star SR 20 R przechwyty/back side	5	22	58	701242
	6	22	58	701243
	8	22	58	701244
	10	22	58	701245
	12	22	58	701246
	16	22	58	701247
Star SR 32 przechwyty/back side	20	22	58	701248
	6	22	66	701249
	8	22	66	701250
	10	22	66	701251
	12	22	66	701252
	16	22	66	701253
	20	22	66	701254