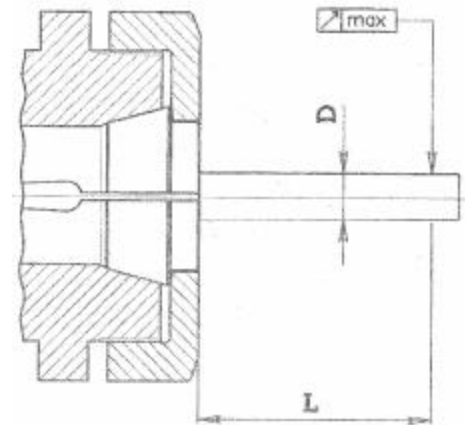
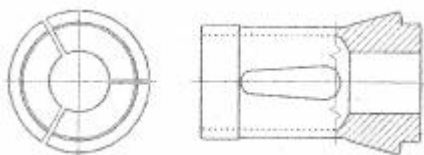


Wartości współosiowości

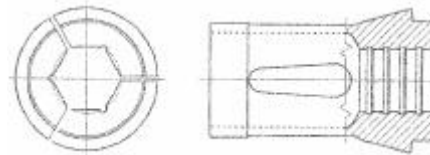
Otwór		L	Ø
0,5	1	3	0,015
1	1,6	6	0,02
1,6	3	10	0,02
3	6	16	0,02
6	10	25	0,02
10	18	40	0,03
18	24	50	0,03
24	30	60	0,03
30	50	80	0,04
50		100	0,04



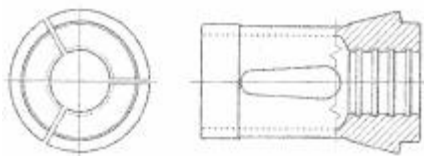
Kształt otworu



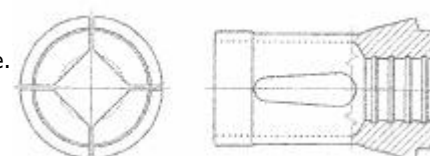
gładki



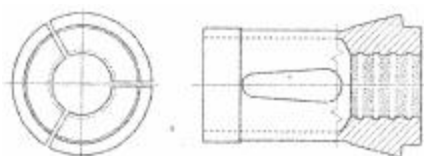
6-kąt



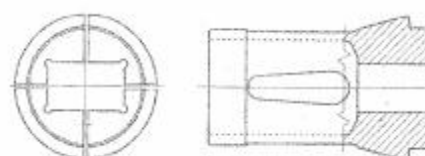
z kanałami poprze.



4-kąt

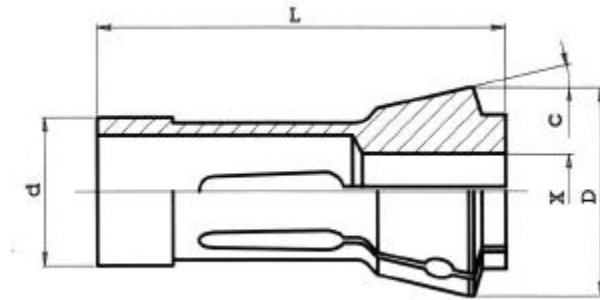


z kanałami
uwzdłuż. i poprzecz.



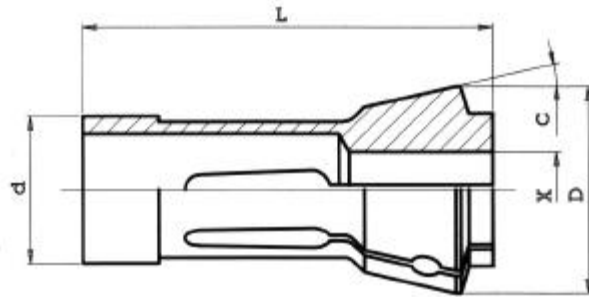
Specjalne profile
na zapytanie

Tuleje zaciskowe



Art.	d	D	L	C	Max. srednica		
					okragly	6kat	4kat
100 E	6	10	30	15°	4,5	—	—
101 E	8	12	42	16°	6 (8)	—	—
102 E	8	13,7	30	21°	5,5	—	—
103 E	8	14	35	15°	5	—	—
109 E	10	16	47	20°	7	—	—
110 E	10	16	43	15°	7	—	—
112 E	11	18,7	41	22°	7,5	—	—
113 E	12	15,5	30,5	10°	10	—	—
117 E	14	18	46	13°	10	—	—
118 E	14	19,5	46	15°	10	—	—
120 E	15	21	64	16°	12	9	7
121 E	15	22	47	20°	10	9	7
123 E	16	22	55	15°	12	10	7
125 E	17,5	22	51	15°	14	—	—
127 E	18	25	67	15°	12	10	9
136 E	20	26	54	15°	16	12	10
1299 E	20	27,5	60	15°	17	15	12
138 E	20	28	67	16°	16	12	10
139 E	22	28	67	13°	16	12	10

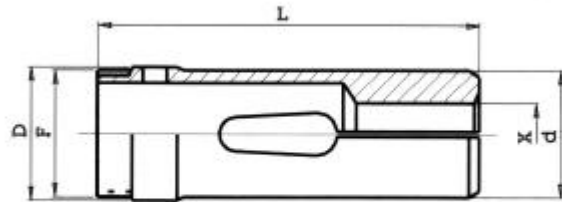
Tuleje zaciskowe



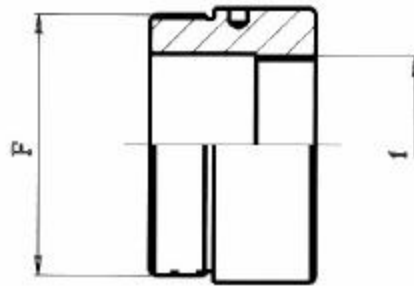
Art.	d	D	L	C	Max. średnica		
					okragly	6kat	4kat
140 E	22	30	55	15°	18	15	12
1323 E	22	32	66	16°	18	15	12
143 E	25	31	54	15°	21	18	15
144 E	25	34	65	15°	20	17	14
145 E	25	35	77	16°	20	17	14
146 E	26	32	67	13°	20	17	14
147 E	27	38	72.7	15°	23	19	16
148 E	28	38	70	15°	24	20	16
1446 E	30	38	65	15°	25	22	18
156 E	30	39,3	87	15°	25	22	14
157 E	30	42	80	16°	25	22	18
161 E	32	45	75	15°	26	22	18
1497 E	34	44	78	16°	28	24	20
1473 E	32	40	65	15°	26	22	18
162 E	35	43	70	15°	25	22	18
163 E	35	48	80	15°	30	26	22
164 E	38,08	49	108	15°	32	27	22
1536 E	37	47	92	16°	32	30	22
171 E	42	55	94	15°	36	32	25
173 E	48	60	94	15°	42	36	30
177 E	58	70	94	15°	52	45	36
185 E	66	84	110	15°	60	52	42
190 E	88	106	115	15	80	—	—
193 E	90	107	130	15°	80	—	—
196 E	112	138	120	15°	100	85	70

Tuleje podające

Art.	D	d	L	F li	Max. średnica		
					okrągły	6kat	4kat
207 E	18	16	70	16x1	12	11	9
217 E	21.5	20.5	70	20x1	16	14	11
220 E	24	22	85	22x1	18	16	13
236 E	30	29	95	28x1	25	22	17
237 E	31	29	90	29x1	25	22	17
254 E	42	40	116	40x1	36	30	25
260 E	52	50	116	50x1	46	40	32
273 E	60	58	140	58x1	52	45	36

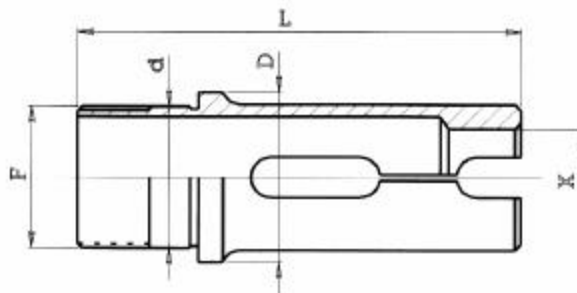


Adapter do tuleji podających



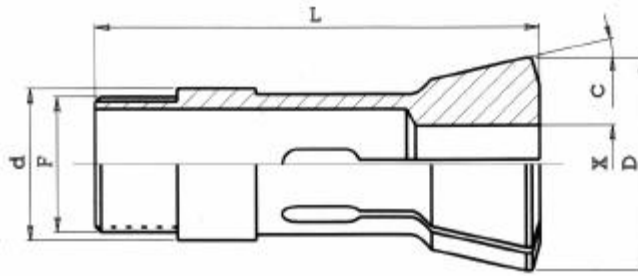
Art.	F li.	f li.	od	do	Maschine
013.103	29x1	22x1	237E	220E	INDEX 25 red. auf INDEX 18
013.104	40x1	28x1	254E	012.037	INDEX 36/B42 red. auf INDEX 24/B30
013.105	40x1	29x1	254E	237E	INDEX 36/B42 red. auf INDEX 25
013.106	58x1	40x1	273E	254E	INDEX 52/B60 red. auf INDEX 36/B42

Tuleje podające zewnętrzne



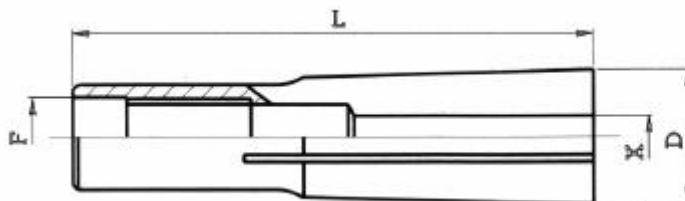
Art.	D	d	L	F li.	Max. średnica		
					okrągły	6kat	4kat
242 E	42	36	120	36x1.5	30	26	21
259 E	56	50	138	50x1.5	42	36	29
278 E	75	68	138	68x1.5	60	52	42

Tuleje zaciskowe



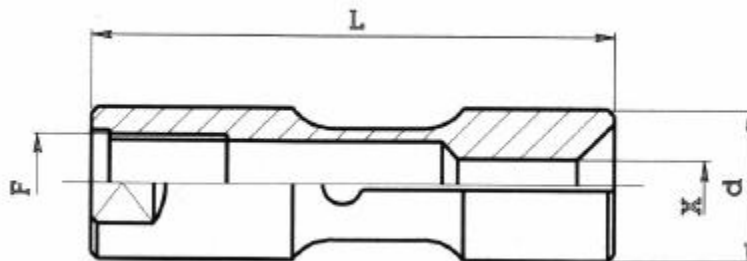
Art.	d	D	L	C	F	X Max. okragły
302 E	8	13	34	20	6,85 x 1/40"	6
303 E	9,3	15	50	21	8,25 x 1/32"	7,5
313 E	10	14,5	73	20	M 9,2 x 1	8
314 E	10	14	41,5	15	S 9,83 x 0,833	8
319 E	12	18	60	20	Tr 12 x 1	10
318 E	12	16	43,5	15	S 11,75 x 1,25	10
324 E	15	21,5	53	20	M 13 x 1	13
330 E	16	24	70	20	Tr 16 x 1,5	13
349 E	20	26,3	69	15	S 19,7 x 1,667	20
350 E	20	27,5	118	20	M 18,5 x 1,4	18
351 E	20	28	80	20	Tr 20 x 1,5	17,5
354 E	20	28	117	17,5	18,9 x 1/20"	17,5
355 E	20	28	117,5	17,5	S 20 x 2	18
358 E	23	32	82	20	21,1 x 1	20
359 E	23	32	90	20	Tr 23 x 1,5	20
369 E	24,12	32	101,5	8,5	7/16" x 1/20"	20
363 E	25	33,5	84	16	M 23 x 1	22
364 E	25	34	92,5	15	S 25 x 1/15"	22
366 E	28	36	102	18	Tr 27 x 1/20"	25
367 E	28	38	100	20	Tr 28 x 1,5	24
385 E	31,75	37,5	83	10	31,45 x 1/20"	26
386 E	32	45	110	20	Tr 32 x 1,5	29
389 E	45	60	140	20	Tr 45 x 2	40
390 E	47	60	110	20	Tr 47 x 1,5	42

Tuleje zaciskowe ze stożkiem Morse'a



Art.	D	L	F	MK	x		Steigung	Maschine
					min	max		
020.200	18	69	M10	2	2	14	0.25	STEINEL SH1-SV1-SV3-5

Tuleje podające do podajników mater. z prawym gwintem



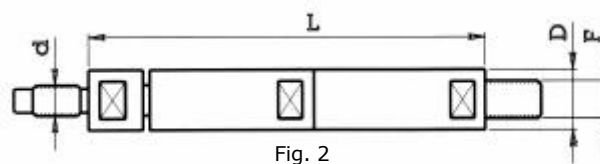
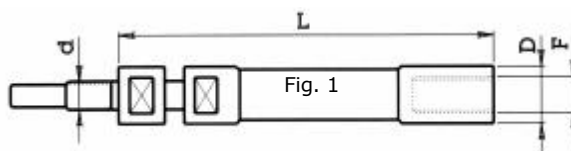
Art.	d	L	F	X min	X max	Podajnik
2001 E	7.5	40	5x0.5	1.6	6.5	IEMCA
036.100	10	50	6x0.75	2	8	CUCCHI
2045 E	10	40	6x0.75	2	8	IEMCA
036.120	12	52	7x0.75	2	10	CUCCHI
2061 E	12	42	7x0.75	2	10	IEMCA
036.140	14	52	8x1	3	12	CUCCHI
036.150	15	52	8x1	2	13	CUCCHI
2101 E	15	42	8x1	2	13	IEMCA
036.160	16	52	8x1	10	14	CUCCHI
036.161	16	42	8x1	10	14	IEMCA
036.180	18	59	10x1	4	16	CUCCHI
2197 E	20	59	10x1	4	18	CUCCHI u. IEMCA
036.220	22	59	10x1	16	20	CUCCHI u. IEMCA
2289 E	25	59	10x1	4	23	IEMCA
036.251	25	59	14x1	4	23	CUCCHI
036.300	30	65	10x1	8	28	IEMCA
036.301	30	65	18x1.5	10	28	CUCCHI
036.400	40	70	25x1.5	10	36	CUCCHI u. IEMCA
036.420	42	70	25x1.5	38	39	CUCCHI u. IEMCA
036.460	46	72	25x1.5	37	42	CUCCHI u. IEMCA
036.550	55	80	25x1.5	43	51	CUCCHI u. IEMCA (1)
036.600	60	80	25x1.5	30	55	CUCCHI u. IEMCA

(1) Auf Anfrage

Końcówki obrotowe

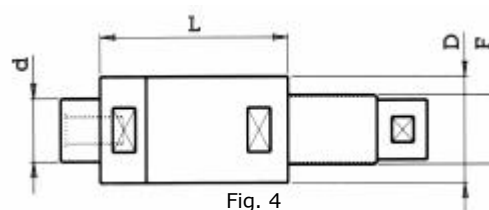
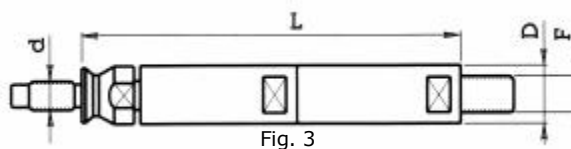
DKońcówki obrotowe z gwintem prawym do „IEMCA”

Art.	D	L	F	d	Fig.
516.007	7.5	126	6x0.75	5x0.5	1
516.010	10	113	8x1	6x0.75	1
516.012	12	116	10x1	7x0.75	1
516.015	15	121	12x1.5	8x1	1
516.020	20	133	14x1.5	10x1	1
516.025	25	133	14x1.5	10x1	1
516.030	30	135	14x1.5	10x1	1

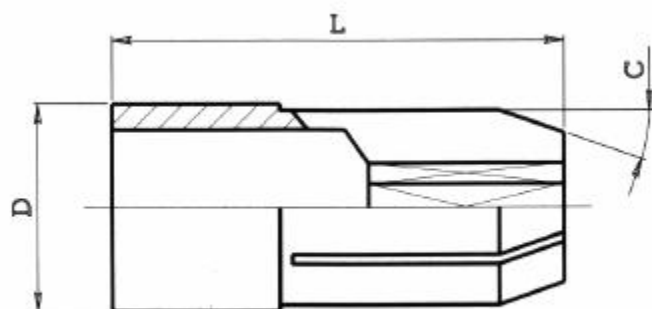


Końcówki obrotowe z gwintem prawym do CUCCHI podajników jednowrzeciono.

Art.	D	L	F	d	Fig.
517.010	10	107	7x1	6x0,75	2
517.012	12	107	8x1,25	7x0,75	2
517.014	14	107	10x1,5	8x1	2
517.016	16	107	10x1,5	8x1	2
517.019	19	118	12x1,75	10x1	2
517.025	25	118	20x1,5	14x1	2
517.030	30	123	24x1,5	18x1,5	2
517.040	40	61	28x1,5	25x1,5	4

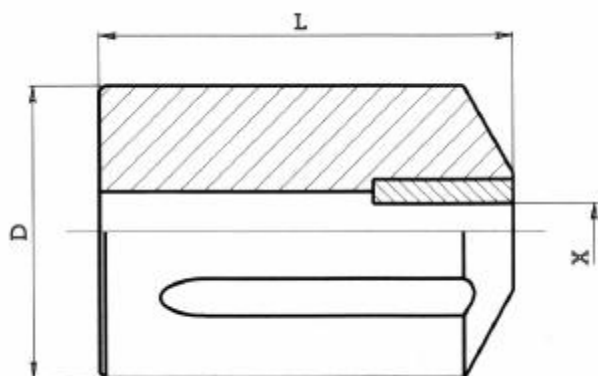


Zaciski podające do końcówek obrotowych



Art.	D	L	C	Maschinen
039.110	9	30	19°	STROHM M4-5 / TORNOS M4-T4
039.130	15	35	19°	STROHM 105-125 / TORNOS M10-R10
039.150	16	35	19°	STROHM 105-125 / TOBRE 10 / TORNOS M10-R10
039.220	28	45	29°	STROHM 205 / TORNOS M20-RR20
039.230	32	45	19°	STROHM 255 / TORNOS M25

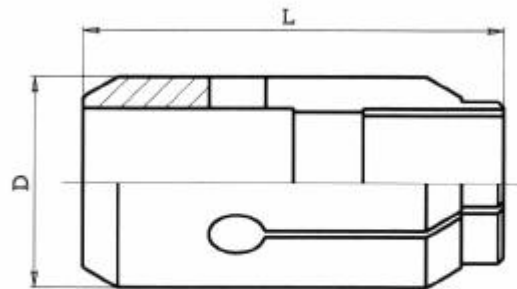
Tuleje prowadzące stałe



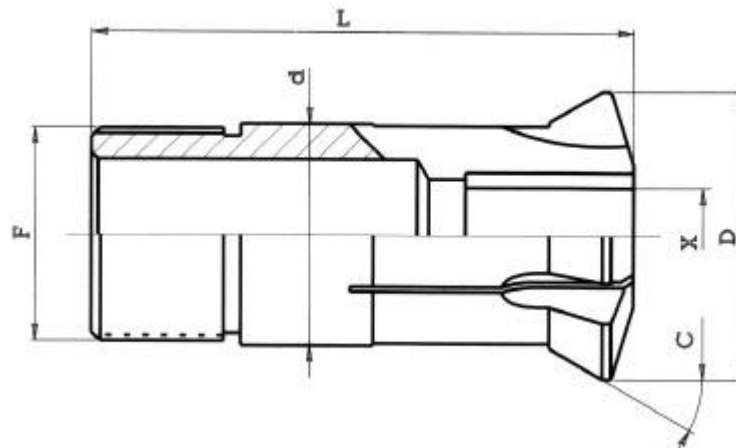
Art.	D	L	d max	Maschinen
040.011	10	18	4.5	STROHM M4-5 / TORNOS M3
040.020	13	30	8	PETERMANN 1-P4 / TORNOS M4-M6-T4-TV / BECHLER A7
040.031	15	30	10	STROHM M75-105-125 / TORNOS M7
040.040	16	30	10	PETERMANN P7-P7R / BECHLER A10 / STROHM M75-105-125
040.050	20	30	13	BECHET 1068-1268 / STROHM 125 / BECHLER A10 / PETERMANN 10-10H7
040.051	22	35	13	TORNOS R10
040.060	25	35	18	PETERMANN 10-10HS-10R-10HSR / OCEA THF25
040.073	32	45	24	STROHM 205-255 / TORNOS M15-R16-RR20-M25 / OCEA THF40
040.080	35	45	22	PETERMANN 2A-2AR-P16-P20
040.090	40	45	30	TORNOS M20-M25-M28 / BECHET 2568 / PETERMANN P25

HM-Tuleje prowadzące—z regulacją

Art.	D	L	Maschinen
041.108	8	30	BECHLER A4-A7
041.116	16	40	BECHLER A7-A10-AE10
041.120	20	40	BECHLER A10
041.130	30	60	BECHLER B12-16-20
041.134	34	60	BECHLER B12-16-20
041.142	42	72	BECHLER C26
041.148	48	73	BECHLER C32

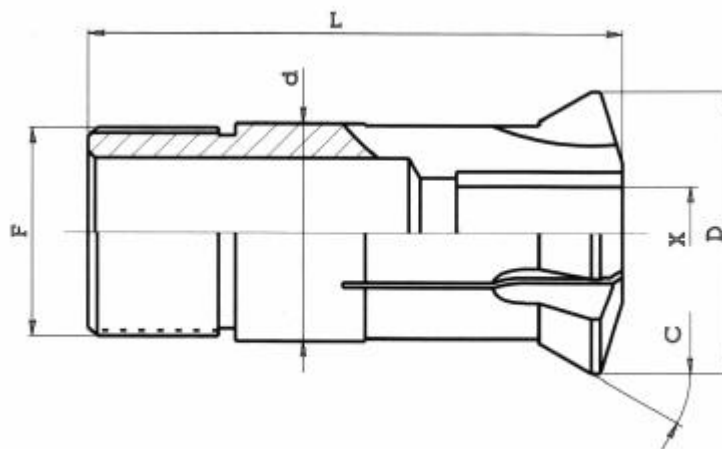


HM-Tuleje prowadzące—z regulacją



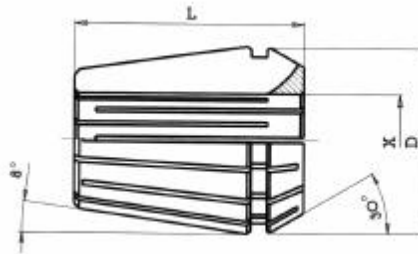
Art.	d	D	L	C	F	Xmax	Maschinen
042.010	7	9.5	30	16°	6x0.5	3.5	PETERMANN P3
042.030	9	11.5	25	30°	6x0.5 int.	4.5	PETERMANN P4
I 351	9	12.5	44	16°	8x0.75	4.5	TORNOS M4-T4-TV / PETERMANN P4 / CITIZEN L10-L10 WATCH
042.050	9	13	52	30°	9x0.7	4.5	TORNOS M4-T4-TV / BECHLER A-AR-AS4 / GAUTHIER 1H-GM75-GM17 / STROHM M 45
042.060	10	14	57	36°	10x1	4.5	TORNOS M4
042.070	11	14.5	53	16°	10x0.75	7	TORNOS M7 / TSUGAMI NP-4W
042.080	12	15.5	50	16°	10x0.75	7	PETERMANN P7
F 103	12	15	52	30°	12x1	7	TORNOS M7-TV-MS1 / BECHLER A-AR-AS7 / PETERMANN NO 1R-P7-M7 / STROHM M-SJ75K M75 / TSUGAMI NP-4W TORNOS-BECHLER ENC 16-162-164
T 340	13	16	41.5	15°	12.5x0.7 5	9	BECHLER AE7 - AE10 - AR10
042.110	13	17	68	5°	13x1	9	TORNOS M7 MAGIC
T 330	14	18	64	16°	13x0.75	9	TORNOS R10
I 353	16	19.8	58	16°	14x1	10	TORNOS MV-R10 / PETERMANN P7R / BECHET RMA7-RMA17 STAR SCN10DX-JNC10-RNC10 / CITIZEN G10-D10-L10-L101-F12 NOMURA I-CAM NN 1053A / TORNOS-BECHLER ENC 16-162-164
F 850	16	20	55	30°	16x1	10	GIGY GL16 / PETERMANN P7R / TORNOS MV
042.150	18	24	69	36°	18x1	10	TORNOS MS7-R10 MAGIC
042.160	18	22	60	30°	18x1	12.7	TORNOS M10-R10-R125.MS7 / GIGY GL16

HM-Tuleje prowadzące—z regulacją



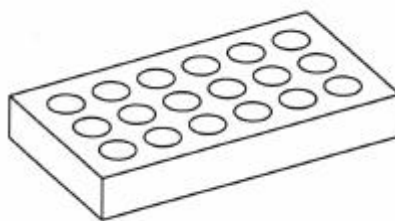
Art.	d	D	L	C	F	X max	Maschinen
F 853	18	22	60	30°	16x1	12.7	TORNOS M10-R10-R125-MS7 / BECHLER A-AR-AS 10 / MANURHIN TRAMINER 13 STROHM M-SJ 125K-M 105-125 / CITIZEN D10-L10-L101-F12 TSUGAMI NT-NP11 / TORNOS-BECHLER ENC 16-162-164
F 104	20	25	55	30°	20x1	13	BECHLER A-AR-AS10 / PETERMAN 10-10HS-PS127 / GAUTHIER 1H-GM75-GM127 STROHM 75-105-125 / TORNOS-BECHLER ENC 16-162-164
T 221	21	24	57.4	12.5°	18x1	12	STAR VNC12-SNC15DX-JNC16-RNC16
I 354	22	29	68	16°	19x1	12	TORNOS M14-M15-R16-M17 / PETERMAN 10R-10HSR / STAR VNC 12 MANURHIN TRAMITER 16-20 KMX 20-26-220-226 / STROHM 205-255 TSUGAMI NT-NP16-NT-NP17-MARK11
F 391	22		68	16°	22x1		TRAUB TNL 16-16G / STROHM M-SJ 155K / NOMURA SN127-SN160-NN160C-D STAR SNC15DX-JNC16-RNC16-SST16-KIR16
F 605	24	30	61	30°	24x1	16	TORNOS M15-R16-M20-RR20 / TORNOS-BECHLER ENC 16-162-164 TOP100 PETERMAN P16 / CITIZEN E16-E16J-F16-G16-L16I-L16N-L16IV-L16VI-L16E TSUGAMI NT-NP16 NT-NP17 MARK11
042.230	25	30	71	30°	25x1	16	TORNOS M14-M15-R16-M20-RR20 / PETERMAN 10R-10HSR / GAUTHIER GM15 BECHET RMA 12-RMA I 12-RMA 15-RMA I 15
040.240	27	30	57	13°	24x1	16	BECHLER BE 16-20
T 223	28	34	81	16°	25x1	20	STAR KNC16-VNC20-KNC20 / CITIZEN L20E-L20VI / TRAUB TNL16
I 357	28		81	30°	25x1	20	MANURHIN TRAMINER 20-KMX20-26-220-226 / TSUGAMI S20-NT-NP20-MARK11
F 355	32	40	71	30°	32x1	21	TORNOS M20-RR20-M24-M25 / PETERMAN 2A-P16R-P20-2AR-P20R BECHET RMA19-RMA I 19 / GAUTHIER GM20 / CITIZEN D16-E20-F20 TSUGAMI NT-NP20
T 227	34	41	87.5	10°	34x1	22	MANURHIN KMX26-KMX226 / STAR SNC25DX-KJR25 / CITIZEN E25-F25 NOMURA NN20R-NN25R / TORNOS-BECHLER ENC 16-162-164
042.260	35	40	65	12°	34x1	26	BECHLER CR26
042.270	40	45	65	12°	38x1	26	BECHLER C26-32
F 105	40	48	71	30°	40x1	26	PETERMAN P25-P25R / BECHET RMA25-RMA I 25-RMA32-RMA I 32-TCN32 GAUTHIER GM20-GM25
042.290	40	48	65	30°	40x1	26	BECHLER B-BR12 B-BR16 B-BR20
042.300	40	48	72	30°	36x1	25	TORNOS-BECHLER ENC 262-264 TOP200 / GILDEMEISTER GAC 25L STROHM M205-255-SN25C
T 229	42	49	82	16°	40x1	32	STAR JNC25-KNC25-JNC32-KNC32-VNC32 / CITIZEN E32 TSUGAMI NT-NP32 NT-NP32 MARK11 / MIRABEL 321 MANURHIN
042.310	43	48	65	12°	42x1	32	BECHLER CR35
042.320	44	53	87	20°	40x1	32	TORNOS MR32
042.330	48	58	73	20°	48x1.25	32	TORNOS M25-M28-R28-MR32 / PETERMAN P25R
115.001	48	56	81	30°	48x1.25	32	BECHLER C-CR26 C-CR32

ER-Zaciski



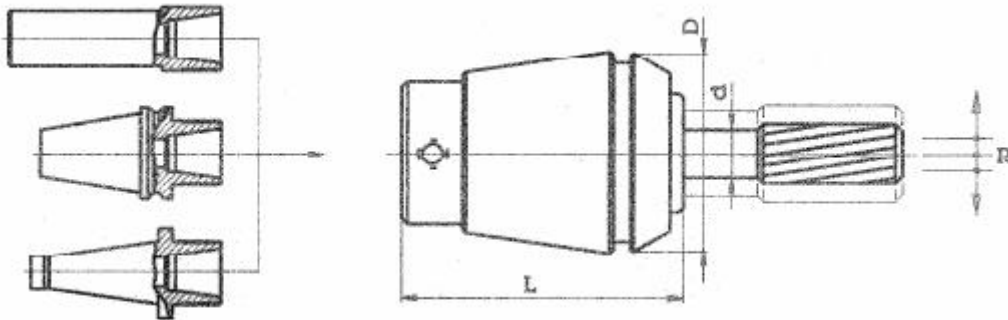
Art.	Typ	D	L	Xmin	Xmax	Stopnio.	Zakres	Zacisk. Serie
4004 E	ER 8	8.5	13.5	1.0	5.0	0.5	0.5	9
4008 E	ER 11	11.5	18	1.0	7.0	0.5	0.5	13
424 E	ER 12	12	20	1.0	7.0	0.5	0.5	13
426 E	ER 16	17	27	1.0	10	0.5	0.5	5+7
428 E	ER 20	21	31	1.0	13	0.5	0.5	5 + 10
430 E	ER 25	26	35	1.0	16	0.5	0.5	5 + 13
470 E	ER 32	33	40	2.5	20	0.5	0.5	2 + 17
472 E	ER 40	41	46	3.0	26	1.0	1.0	28
477 E	ER 50	52	60	6	34	1.0	1.0	29

Pojemnik drewniany do ER-Zacisków



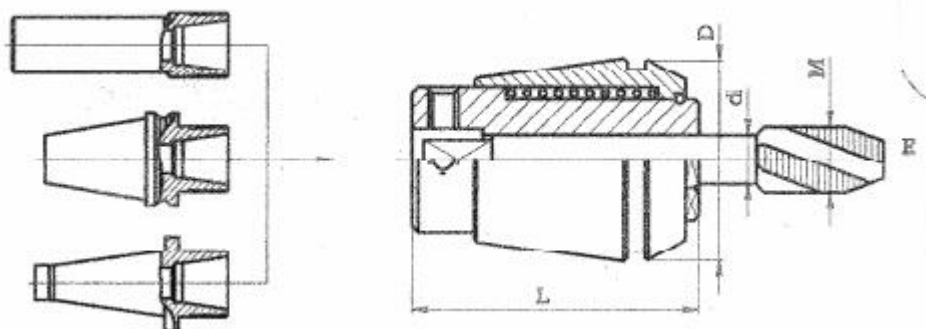
Art.	Zange	für ... Stück
050.108B	ER 8	10
050.111B	ER 11	14
050.112B	ER 12	14
050.116B	ER 16	12
050.120B	ER 20	15
050.125B	ER 25	18
050.132B	ER 32	20
050.140B	ER 40	30

Zaciski pod rozwiertaki



Art.	D	L	średnica d
IM-CBA-16	17	29	2-3-4-5-6-7
IM-CBA-20	21	32	3-4-5-6-7-8
IM-CBA-25	26	35	3-4-5-6-7-8-9-10
IM-CBA-32	33	44	4-5-6-7-8-9-10-11-12-13-14-15-16
IM-CBA-40	41	56	4-5-6-7-8-9-10-11-12-13-14-15-16

Wysuwane zaciski pod wiertła

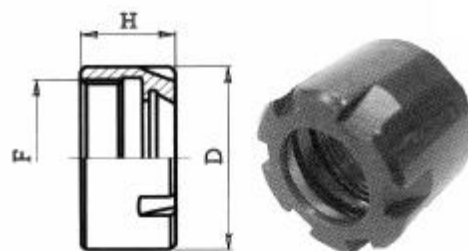


Art.	D	L	Gwint M	średnica d
ZM 050.016	17	27	M1-M6	1.4 - 1.6 - 1.8 - 2 - 2.2 - 2.5 - 2.8 - 3 - 3.15 - 3.5 - 3.55 - 4 - 4.5 - 5 - 5.5
ZM 050.020	21	31	M1-M8	2.2 - 2.5 - 2.8 - 3 - 3.15 - 3.5 - 3.55 - 4 - 4.5 - 5 - 5.5 - 5.6 - 6 - 6.2 - 7
ZM 050.025	26	34	M3.5-M10 (M12)	2.5 - 2.8 - 3 - 3.15 - 3.5 - 3.55 - 4 - 4.5 - 5 - 5.5 - 5.6 - 6 - 6.2 - 6.3 - 7 - 8 - 8.5 - 9
ZM 050.032	33	43	M4-M12 (M16)	4.5 - 5 - 5.5 - 5.6 - 6 - 6.2 - 6.3 - 7 - 8 - 8.5 - 9 - 10 - 10.5 - 11 - 11.2 - 12 - 12.5
ZM 050.040	41	54	M6-M16 (M20)	6 - 6.2 - 6.3 - 7 - 8 - 8.5 - 9 - 10 - 10.5 - 11 - 11.2 - 12 - 12.5 - 14 - 15 - 16 - 17

Nakrętki oprawek

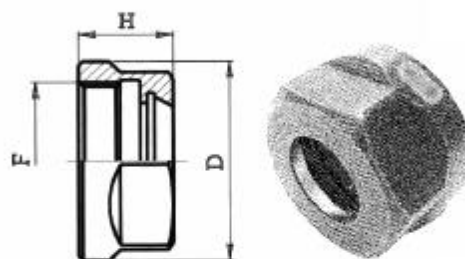
Überwurfmuttern - Mini

Art.	D	H	F
052.108	12	11	10x0.75
052.111	16	11	13x0.75
052.116	22	17	19x1
052.120	28	19	24x1
052.125	35	20	30x1



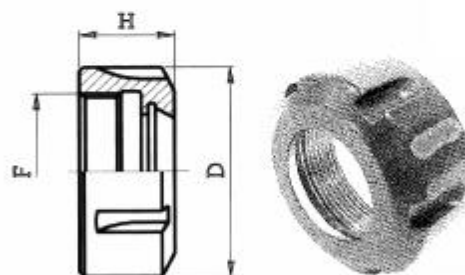
Überwurfmuttern - Standard

Art.	D	H	F
052.211	19	11	14x0.75
052.216	28	17	22x1.5
052.220	34	19	25x1.5



Überwurfmuttern - Standard

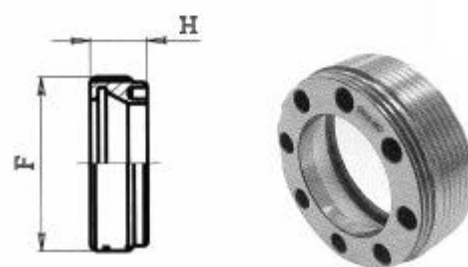
Art.	D	H	F
052.316	32	17.5	22x1.5
052.320	35	19	25x1.5
052.325	42	20	32x1.5
052.332	50	22	40x1.5
052.340	63	25	50x1.5
052.350	78	35	64x2



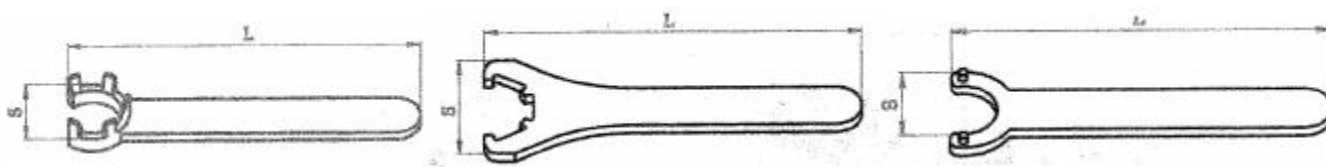
Überwurfmuttern - Gleitgelagert

Art.	D	H	F
052.411	—	6	18x1
052.416	—	8	24x1
052.420	—	11	28x1.5
052.425	—	12.5	32x1.5
052.432	—	14	40x1.5
052.432 B*	—	14	40x1.5

* für 6-Kant-schlüssel



Klucze

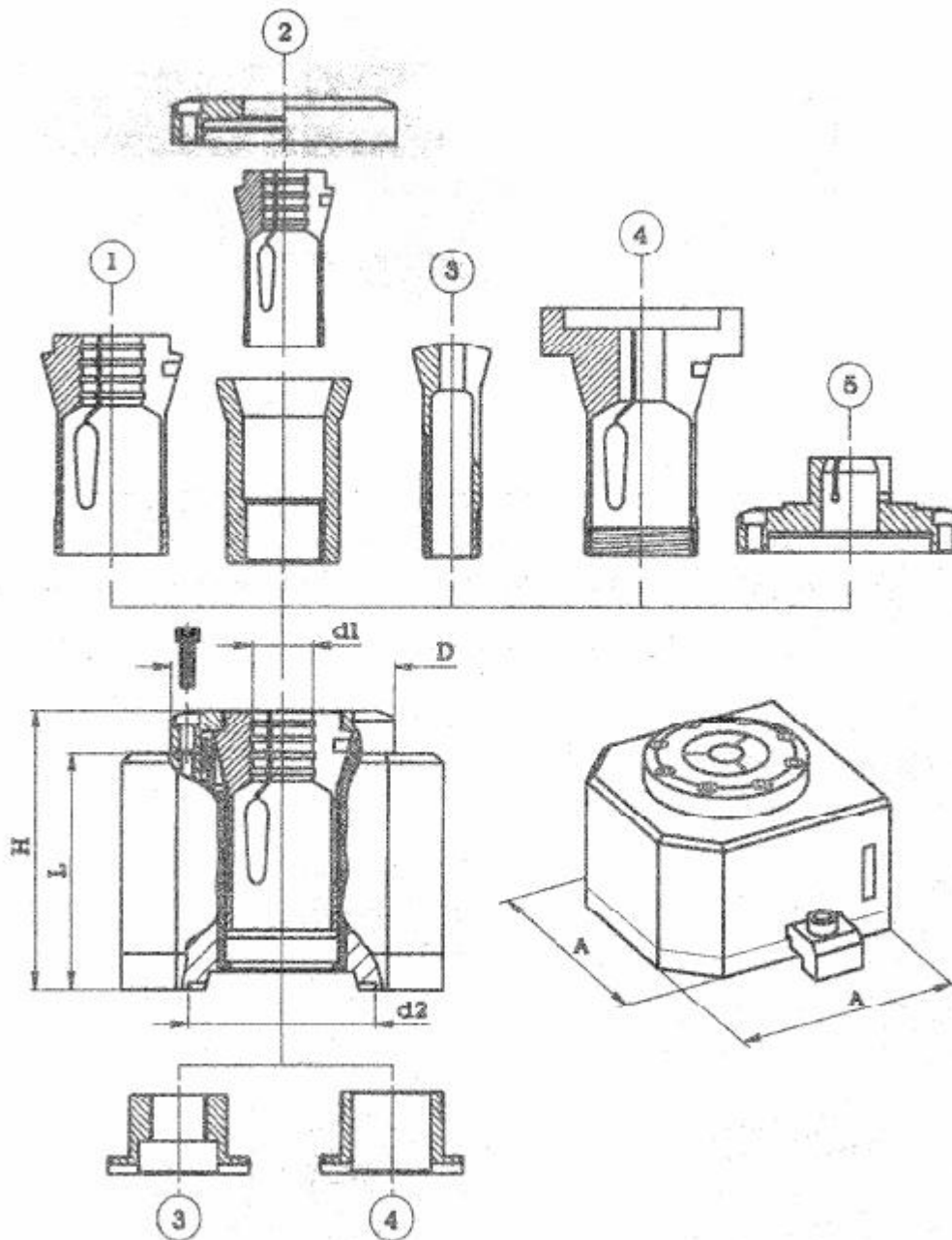


Art.	S	L	Für Art.
053.108	12	80	052.108
053.111	16	96	052.111
053.116	22	118	052.116
053.120	28	130	052.120
053.125	35	132	052.125

Art.	S	L	Für Art.
053.316	50	160	052.316
053.320	57	180	052.320
053.325	65	210	052.325
053.332	75	250	052.332
053.340	90	290	052.340
053.350	110	350	052.350

Art.	S	L	Für Art.
053.420	20.5	160	052.420
053.425	23.5	180	053.425
053.432	32	200	053.432

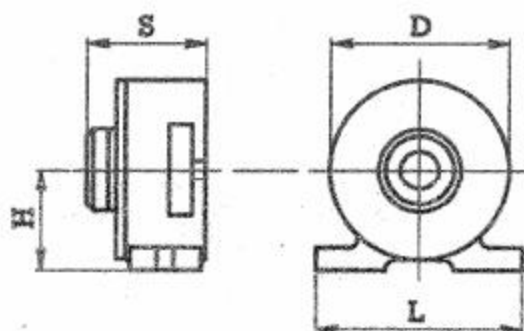
Pneumatyczne oprawki zaciskowe



	Art.	A	L	H	d1	d2	D	Zange
1	772.015	85x85	70	82	2-12	42	58	010.029
1	772.115	85x85	70	82	2-18	42	58	010.051
2	772.125	140x140	100	119	2-26	80	96	010.084
1	772.142	140x140	100	119	4-42	80	96	010.117
3	772.020	85x85	70	82	1-20	42	-	018.028
3	772.025	140x140	100	119	2-25	80	-	018.048
4 u. 5	Sonderzange auf Anfrage							

Siła zacisku w KN			
6 BAR	8 BAR	10 BAR	MAX 10 BAR
5 KN	7 KN	9 KN	
5 KN	7 KN	9 KN	
12 KN	16 KN	20 KN	
12 KN	16 KN	20 KN	
5 KN	7 KN	9 KN	
12 KN	16 KN	20 KN	

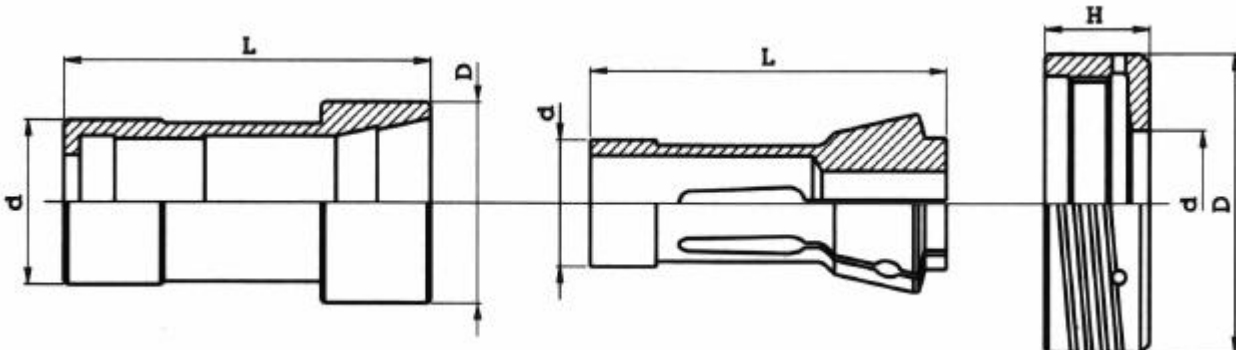
Pneumatyczne oprawki



Art.	D	L	H	S	Otwór	do Zacisku
771.125	152	170	77	97	2 - 26	010.084
771.142	165	180	85	117	4 - 42	010.117

Siła zacisku in KN			MAX 10 BAR
6 BAR	8 BAR	10 BAR	
5 KN	7 KN	9 KN	
6 KN	8 KN	10 KN	

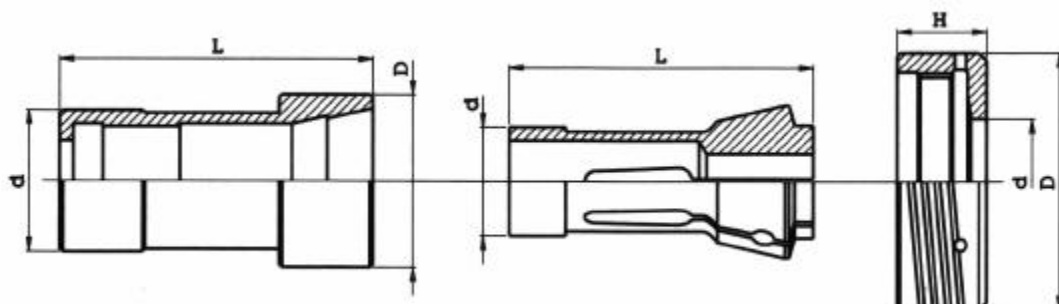
Tuleje do zacisków i nakrętki



Tuleja			Zacisk			Nakrętka				Maschine	
Art.	d	D	L	Art.	d	L	Art.	D	d		H
066.031	20	24	62	117E	14	46	—	—	—	—	BECHLER A 10
066.210	20	24	86	120E	15	64	072.210	38	15.5	23	FEINLER FA 10
066.220	27	32(37)	61	140E	22	55	072.220	46	22.5	26	FEINLER FA 15
066.224	18	24	97.8	120E	15	64	—	—	—	—	GAUTHIER GM 12
066.310	30	32	64	136E	20	54	072.310	45	20	41	INDEX ON-OR 12
066.315	30	38	63.5	143E	25	54	072.315	62	24	23	INDEX DG 12
066.316	30	38	63.5	140E	22	55	072.316	62	22	23	INDEX DG 12 (red.)
066.320	28	38	68	140E	22	55	072.320	64.5	22	31.5	INDEX 12
066.321	28	38	68	136E	20	54	072.321	64.5	20	31.5	INDEX 12 (red.)
066.330	34	46	82	148E	28	70	072.330	68	29	31.5	INDEX 18
066.331	34	46	82	140E	22	55	072.331	68	22	31.5	INDEX 18 (red.)
066.335	34	48	82	148E	28	70	072.335	74	29	34	INDEX C19
066.340	42	52	82	162E	35	70	072.340	72	35	31.5	INDEX 25
066.341	42	52	82	148E	28	70	072.341	72	29	31.5	INDEX 25 (red.)
066.341B	42	52	82	147E	27	72.7	—	—	—	—	INDEX 25 (red.)
066.350	42	58	92	163E	35	80	072.350	88	39	38.5	INDEX 24
066.351	42	58	92	148E	28	70	072.351	88	29	38.5	INDEX 24 (red.)
066.352	42	58	92	162E	35	70	072.352	88	35	38.5	INDEX 24 (red.)
066.350	42	58	92	163E	35	80	972.355	88	39	38.5	INDEX B30
066.350	42	58	92	163E	35	80	072.345	84.5	39	35	INDEX C29
066.351	42	58	92	148E	28	70	072.346	84.5	29	35	INDEX C29 (red.)
066.352	42	58	92	162E	35	70	072.346B	84.5	35	35	INDEX C29 (red.)
066.350	42	58	92	163E	35	80	072.343	83	39	13	INDEX E26 – ER26

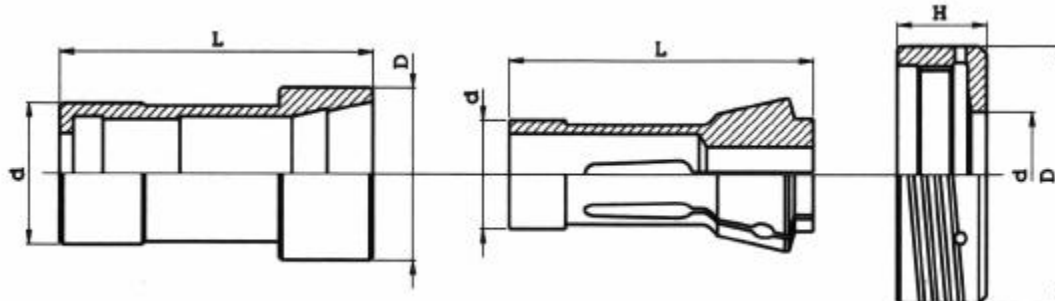
Federn für Druckhülsen siehe S. 114

Tuleje do zacisków i nakretki



Art.	Tuleja			Zacisk			Nakrętka				Maschine
	d	D	L	Art.	d	L	Art.	D	d	H	
066.360	56	70	104	173E	48	94	072.360	97	51	38.5	INDEX 36 - B42
066.361	56	70	104	163E	35	80	072.361	97	39	38.5	INDEX 36 - B42 (red.)
066.360	56	70	104	173E	48	94	072.363	102	51	30	INDEX E42 - ER42
066.361	56	70	104	163E	35	80	072.364	102	39	30	INDEX E42 - ER42 (red.)
066.370	74	94	108	185E	66	110	072.370	117	74.5	41.5	INDEX 52
066.371	74	94	108	173E	48	94	072.371	117	51	41.5	INDEX 52 (red.)
066.380	74	94	120	185E	66	110	072.380	122	74.5	34	INDEX B60
066.381	74	94	120	173E	48	94	072.381	122	51	34	INDEX B60 (red.)
066.380	74	94	120	185E	66	110	072.385	136	74.5	16	INDEX E60 - ER60
066.381	74	94	120	173E	48	94	072.386	136	51	16	INDEX E60 - ER60 (red.)
066.910	28	40	70	140E	22	55	—	—	—	—	MUPEN 15
066.572	21	25	55	121E	15	47	—	—	—	—	PETERMAN P7R
066.572R	21	25	55	109E	10	47	—	—	—	—	PETERMAN P7R (red.)
066.577	30	38	98	1323E	22	66	—	—	—	—	PETERMAN P 16 - P 16R
066.670	40	50	84	161E	32	75	—	—	—	—	SKODA 20
066.791	12	15	66	101E	8	42	—	—	—	—	STROHM M4-5
066.210	20	24	86	120E	15	64	072.730	34	16	20	STROHM 105-125
066.735	35	40	100	145E	25	77	072.741	63	28	40	STROHM 205
066.740	38	45	110	157E	30	80	072.740	63	35	40	STROHM 255
066.741	38	45	110	145E	25	77	072.741	63	28	40	STROHM 255 (red.)
066.756R	65	76	110	173E	48	94	072.756R	115	51	42	TAREX L52 (red.)

Tuleje do zacisków i nakrętki



Tuleja				Zacisk			Nakrętka				Maschine
Art.	d	D	L	Art.	d	L	Art.	D	d	H	
066.789	30	30	69	136E	20	54	—	—	—	—	TORNOS ENC 164
066.790	15	15	51	101E	8	42	—	—	—	—	TORNOS T4
066.791	12	15	66	101E	8	42	—	—	—	—	TORNOS M4
066.794	22	26	90	120E	15	64	072.794	37	16.5	17	TORNOS R10
066.800	28	38	70	140E	22	55	—	—	—	—	TRAUB TC 15
066.810	33	33	52	140E	22	55	072.810	53	22	45	TRAUB A 15
066.820	34	42	67	148E	28	70	072.820	63	29	39	TRAUB A 20
065.821	34	42	67	140E	22	55	072.821	63	22	39	TRAUB A 20 (red.)
066.830	37	52	96	161E	32	75	072.830	72	35	39	TRAUB A 25
066.831	37	52	96	140E	22	55	072.831	72	22	39	TRAUB A 25 (red.)
066.850	40	52	96	161E	32	75	072.830	72	35	39	TRAUB A 26
066.860	52	63	116	171E	42	94	—	—	—	—	TRAUB A 36
066.870	54	68(75)	114	173E	48	94	072.870	91	51	46	TRAUB A 42
066.871	54	68(75)	114	161E	32	75	072.871	91	35	46	TRAUB A 42 (red.)
066.872	60	70	135	173E	48	94	072.872	130	51	23	TRAUB TNS 42
066.872R	60	70	135	—	52	92	072.872R	130	55	23	TRAUB TNS 42
066.873	54	74	115	173E	48	94	—	—	—	—	TRAUB TG 42/110
066.880	74	86(93)	114	185E	66	110	072.880	105	74.5	44.5	TRAUB A 60
066.881	74	86(93)	114	173E	48	94	072.881	105	51	44.5	TRAUB A 60 (red.)
966.885	75	95	138	185E	66	110	072.885	140	74.5	22	TRAUB TNF 60/140
066.908	30	35	85	144E	25	65	—	—	—	—	TRAUB TNL 16
066.910	28	40	70	140E	22	55	—	—	—	—	TRAUB TD 16
066.920	40	54	95	161E	32	75	072.920	78	35	40	TRAUB TD 26 (2)
066.920	40	54	95	161E	32	75	072.920B	78	35	40	TRAUB TD 26 (3)
066.930	50	68	115	171E	42	94	072.930	86	43.5	40	TRAUB TD 36 (2)
066.930	50	68	115	171E	42	94	072.930B	86	43.5	40	TRAUB TD 36 (3)
066.931	50	68	115	161E	32	75	072.931	86	35	40	TRAUB TD 36 (red.) (2)
066.931	50	68	115	161E	32	75	072.931B	86	35	40	TRAUB TD 36 (red.) (3)
066.870	54	68(75)	114	173E	48	94	072.870	91	51	46	TRAUB TB 42
066.871	54	68(75)	114	161E	32	94	072.871	91	35	46	TRAUB TB 42 (red.)
066.950	74	86(93)	138	185E	66	110	072.880	105	74.5	44.5	TRAUB TB 60
066.951	74	86(93)	138	173E	48	94	072.881	105	51	44.5	TRAUB TB 60 (red.)
066.952	82	95	138	185E	66	110	—	—	—	—	TRAUB TF 60

(2) Baujahr bis 1976

(3) Baujahr nach 1976